

Bottle Crushers

Product Specification Sheets

for

EWPR187 – Bottle Crusher
(Volume Fed)

EWPR401 – Bottle Crusher
(Stand Alone)

EWPR402 – Bottle Crusher
(Under the Counter)



WASTE - EQUIPMENT SERVICES



BOTTLE CRUSHERS

Introduction:

Any business or industry where glass bottles, jars, glass storage containers etc. are a waste stream will be all too aware of the problems associated with their disposal. Whether behind a bar, in a corporate hospitality scenario, hotel or in certain industrial applications, the storage of glass containers and bottles takes up valuable space that could be used for other purposes and is very labour intensive.

The use of a suitable bottle crusher, whether at the point of end use or in a waste processing area, takes the glass container and breaks it into 'glass cullet' which is typically up to 80% less volume (or a factor of 5:1) than the original container. Glass cullet is far easier to manage, takes up less storage space, is quieter to move and is the standard form for ethical glass recycling.

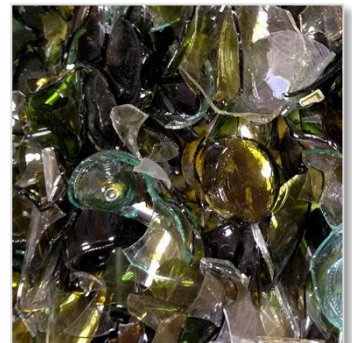
Depending on the application and individual site, many bottle crushers can be installed at the point of end use (i.e. behind the bar, the return section or 'back of house'). As the bottles/containers are empty/returned, rather than storing them for future processing they are crushed immediately into an easy to move wheeled bin or tote which when full, can be removed ready for carrier collection. This results in far fewer movements, less labour and considerable time savings.

Waste Equipment Services provide a range of bottle crushers individually tailored to your needs and particular application, whether under the counter, stand alone, volume fed or fully custom.

Advantages of Bottle Crushers:



- ✓ Massive reduction in glass storage space.
- ✓ Savings in handling time.
- ✓ Savings in labour handling costs.
- ✓ Savings in carrier collection costs (fewer bins).
- ✓ Reduction in 'bottle clinking' noise pollution.
- ✓ Reduced to standard 'cullet' form for recycling.
- ✓ Simple and easy machine operation.
- ✓ Easily moveable machine units.
- ✓ Small machine footprint.
- ✓ Self-contained units.
- ✓ Powered by 240 Volt/50Hz.



Glass Recycling Facts:

- ✓ Glass is 100% recyclable and can be recycled endlessly without loss in quality or purity.
- ✓ Over a ton of natural resources are saved for every ton of glass recycled.
- ✓ Energy costs drop about 2-3% for every 10% of cullet used in the manufacturing process.
- ✓ An estimated 80 percent of recovered glass containers are made into new glass bottles.
- ✓ A glass container can go from a recycling bin to a store shelf in as little as 30 days.
- ✓ One ton of carbon dioxide is reduced for every six tons of recycled container glass used in the manufacturing process.
- ✓ Recycled glass cullet can be substituted for up to 95% of raw materials required to manufacture a fresh bottle.
- ✓ Recycled glass is sought by the glass packaging industry as it requires less energy to process, and therefore is more cost effective than virgin glass.

Waste Equipment Services would be pleased to visit your site for a full assessment of your bottle crushing needs by looking at site logistics & waste volumes and advise which bottle crusher solution is best suited to your individual requirements

DIRECT PURCHASE or FLEXIBLE RENTAL AGREEMENT

Contact us to discuss your individual requirements

Telephone: 0330 223 0895 E-Mail: hello@waste-equip.co.uk

Images are for illustrative purposes only, products may vary, refer to contract for full information and final agreed specification

WASTE - EQUIPMENT SERVICES

BOTTLE CRUSHER – Product Code: EWPR187

The **EWPR187 BOTTLE CRUSHER** is a compact solution which enables it to cater for high volume bottle crushing, sites with limited space availability or specific budgetary requirements.

This **Volume Fed** bottle crusher can crush up to 4000 bottles per hour or 680 bottles in 10 minutes and can be used indoors and outdoors. The built-in extraction system makes it ideal for use in areas with restricted ventilation. Waste glass is collected in a 140L wheelie bin located inside the machine.

Crushing waste glass bottles eliminates the need for sorting bottles, reduces the number of storage bins required and the area for storing those bins. This generates an overall saving on the costs of waste glass bottle disposal.

All equipment is manufactured with all safety requirements in accordance with CE directives



- ✓ Reduces Waste Disposal Costs
- ✓ Reduces Bottle Volume by 5:1
- ✓ 140 litre Wheelie Bin for 680 Bottles
- ✓ Reduces Glass Noise Pollution
- ✓ All Crushed Glass Can be Recycled
- ✓ Simple to use & Operate

Specification - Bottle Crusher (EWPR187)

Height (mm)	1920mm
Width (mm)	840mm
Depth (mm)	1060mm
Weight (kg)	185kg
Power	220 Volt or optional 110 Volt
Certification	CE Certified. Manufactured to ISO 9001
Colour	Green
Finish	Primed and Powder Coated

Due to continued product development, designs and specifications are subject to change without notice.

DIRECT PURCHASE or FLEXIBLE RENTAL AGREEMENT

Contact us to discuss your individual requirements

Telephone: 0330 223 0895 E-Mail: hello@waste-equip.co.uk

Images are for illustrative purposes only, products may vary, refer to contract for full information and final agreed specification

WASTE - EQUIPMENT SERVICES



BOTTLE CRUSHER – Product Code: EWPR401

The **EWPR401 BOTTLE CRUSHER** is a compact solution which enables it to cater for medium to high volume bottle crushing, sites with limited space availability or specific budgetary requirements.

The **EWPR401** is a **Stand-Alone**, high capacity glass bottle crusher or glass breaker designed to save hospitality businesses on their overall costs of waste glass disposal. This unit is designed to stand in the bar area & allow staff to crush waste glass bottles as the bottles are poured or as they are returned from the floor. The crushed glass is held in a 140 Litre bin holding up to 680 bottles equivalent of crushed glass. This unit sits well in any 'back of house' situation and operates at a very low 68 dB noise level which is similar to the noise level generated by a commercial bar glass washer unit.

All equipment is manufactured with all safety requirements in accordance with CE directives



- ✓ Small footprint (600mm x 600mm)
- ✓ Reduces Bottle Volume by 5:1
- ✓ 140 litre Wheelie Bin for 680 Bottles
- ✓ Simple to use, easy to empty
- ✓ Low Noise Operation
- ✓ Savings on storage & Labour Costs

Specification - Bottle Crusher (EWPR401)	
Height (mm)	1700mm
Width (mm)	600mm
Depth (mm)	600mm
Weight (kg)	TBA
Power	220 Volt or optional 110 Volt
Certification	CE Certified. Manufactured to ISO 9001
Colour	Black
Finish	Primed and Powder Coated

Due to continued product development, designs and specifications are subject to change without notice.

DIRECT PURCHASE or FLEXIBLE RENTAL AGREEMENT

Contact us to discuss your individual requirements

Telephone: 0330 223 0895 E-Mail: hello@waste-equip.co.uk

Images are for illustrative purposes only, products may vary, refer to contract for full information and final agreed specification

WASTE - EQUIPMENT SERVICES

BOTTLE CRUSHER – Product Code: EWPR402

The **EWPR402 BOTTLE CRUSHER** is an extremely compact unit which enables it to cater for low to medium volume bottle crushing, sites with limited space availability or specific budgetary requirements.

The **EWPR401 Under the Counter** unit saves on labour, on storage space and on waste glass disposal costs. This machine fits under a standard height bar counter and allows staff to crush the waste glass bottles as they are poured or as the empty bottles are returned from the floor. Crushing waste glass bottles at the point of production saves both space and time and keeps staff focused on serving customers rather than managing waste glass bottles in the bar area. The machine starts automatically as the glass bottles are fed and the crushed glass or cullet is collected in a box within the machine itself.

All equipment is manufactured with all safety requirements in accordance with CE directives.



- ✓ Auto Start when bottles fed in
- ✓ Handles bottles up to 1 litre volume
- ✓ Self Contained Tote Collection Box
- ✓ Simple to use, easy to empty
- ✓ Holds Equivalent Glass to around 90 bottles
- ✓ Low Height for 'Under-Bar' Installation

Specification - Bottle Crusher (EWPR402)

Height (mm)	840mm
Width (mm)	600mm
Depth (mm)	600mm
Weight (kg)	TBA
Power	220 Volt or optional 110 Volt
Certification	CE Certified. Manufactured to ISO 9001
Colour	Black
Finish	Primed and Powder Coated

Due to continued product development, designs and specifications are subject to change without notice.

DIRECT PURCHASE or FLEXIBLE RENTAL AGREEMENT

Contact us to discuss your individual requirements

Telephone: 0330 223 0895 E-Mail: hello@waste-equip.co.uk

Images are for illustrative purposes only, products may vary, refer to contract for full information and final agreed specification

WASTE -
EQUIPMENT
SERVICES



www.waste-equip.co.uk

Registered Office:

Boyes Barn Whites Hill, Owslebury, Winchester, Hampshire, SO21 1LT

Registered No. 08306433 VAT No: 176 0513 17

(Waste **Equipment** Services is a trading style of The Waste Group Services Ltd.)