



WASTE PROCESSING EQUIPMENT CATALOGUE

- VERTICAL BALERS
- HORIZONTAL BALERS
- COMPACTORS
- BOTTLE CRUSHERS
- FOOD WASTE STATION
- LIFTING & MOVING
- GENERAL

Telephone Enquiries: 0330 223 0895
e-mail: hello@waste-equip.co.uk



**WASTE -
EQUIPMENT**
SERVICES

www.waste-equip.co.uk

Waste Equipment Services WASTE PROCESSING EQUIPMENT

About Us

'Waste Equipment Services' is one division of **The Waste Group Services Ltd.** Our other divisions encompass all aspects of Waste Management & Processing and include;



**WASTE -
EQUIPMENT**
SERVICES

- ✓ Equipment Sales & Rental
- ✓ Supply of Consumables
- ✓ Service, Maintenance & Repair

**WASTE
TRAINING**
SOLUTIONS

- ✓ Statutory Induction Training
- ✓ Accredited & CPD Certified Training
- ✓ Refresher Training

**WASTE
COLLECTING**
SERVICES

- ✓ Collection of General Waste
- ✓ Collection of Recyclables
- ✓ Specialist Collections & Disposal

We also offer a full **Waste Consultancy Service** which looks at all aspects of Waste Management for companies and groups to ensure maximum efficiency, legislative compliance and streamlining of costs.

Through our '**Green Initiative**' program you are able to receive justified recognition for your efforts in running an ethical and sustainable business by working towards becoming a '**Centre of Green Excellence**'. This clearly demonstrates to your customers and staff that as an ethical company, you are fully committed to reducing your company's carbon footprint.



Telephone Enquiries: 0330 223 0895
e-mail: hello@waste-equip.co.uk



For further information on any of our Waste Management Services please contact us.

We Look Forward to Hearing from You.



Waste Equipment Services WASTE PROCESSING EQUIPMENT

About our Catalogue

Our '**Waste Processing Equipment Catalogue**' is an overview of the major items of Waste Processing Equipment we supply either on a direct purchase or rental basis.

The very nature of waste management & waste processing means that every site and client we work with has different and individual requirements depending on variables such as company size, volume of waste, number of waste streams, staffing levels etc. As such, this catalogue is by no means an exhaustive list of what we are able to offer.

If you have a particular waste processing requirement, we always recommend that an on-site visit from one of our experienced staff gives us the best opportunity to fully determine your needs and allow us to accurately assess which is the correct piece of equipment for the job.

We are aware that in any fast moving business 'The Production of Waste Waits for No Man' and therefore, by the time you realise you need an item of equipment, you want it as soon as possible and installed quickly and professionally with the minimum of disturbance to your company.

We are fortunate in having many of the items in our catalogue in stock as either new supply or refurbished equipment and if not, our purchasing power generally allows us to get equipment very quickly.

We have our own team of professional and very experienced waste equipment engineers who can usually react faster than most, whether that be for installation or indeed service and repair.

Our catalogue is divided into the following main categories;

- **VERTICAL BALERS**
- **HORIZONTAL BALERS**
- **COMPACTORS**
- **BOTTLE CRUSHERS**
- **FOOD WASTE STATION**
- **LIFTING & MOVING**
- **GENERAL**

We Look Forward To Working With You

WASTE PROCESSING EQUIPMENT

CATALOGUE

Telephone Enquiries: 0330 223 0895

e-mail: hello@waste-equip.co.uk

Vertical Balers

Product Specification Sheets

for

EWPR124 – Mini Baler

EWPR122 – Midi Baler

EWPR123 – Mill Size Baler



WASTE - EQUIPMENT SERVICES



VERTICAL BALERS

Introduction:

It is widely accepted that all companies and organisations have a responsibility to reduce the amount of waste being sent to landfill. This can only be achieved by correct and thorough separation of waste into individual waste streams and to recycle as much of that waste as is practical.

With the correct processes and protocols in place, waste streams such as cardboard, paper, plastics and cans are easily separated and can be baled into manageable loads using a vertical baler.

The choice of which baler is right for you will be governed by several key factors which may include;

- ✓ Volume of waste produced.
- ✓ Available space to install the baler.
- ✓ Space around the baler for safe operation.
- ✓ Access to the baler for safe movement of completed bales.
- ✓ Power supplies available - 240 Volt/3 Phase?

Waste Equipment Services provide a range of vertical balers individually tailored to your needs and particular application. We will carefully analyse your individual waste streams, look closely at your site and staffing levels and advise the best option for you to maximise your recycling and **REDUCE YOUR OVERALL CARBON FOOTPRINT.**

Advantages of Balers:



- ✓ Large reduction in waste going to landfill.
- ✓ Reduced carbon footprint
- ✓ Savings in labour handling costs.
- ✓ Savings in carrier collection costs (fewer bins).
- ✓ Reduced storage requirements (fewer bins).
- ✓ **REBATES FROM SELLING BALED MATERIAL**
- ✓ Simple and easy machine operation.
- ✓ Small machine footprint.
- ✓ Fully Self-contained units.
- ✓ No need to pre-crush waste material.
- ✓ Statutory Induction Training with machine install.



Cardboard Recycling Facts:

- ✓ Recycled paper produces 73% less air pollution than if it was made from raw materials.
- ✓ It takes 24 trees to make 1 ton of newspaper.
- ✓ Some examples of recyclable cardboard (and paper).
Cardboard boxes e.g. cereal boxes, shoe boxes etc., cardboard packaging and cores, multi-grade paper (from printers), sorted office waste paper i.e. copier paper, white letter, plain envelopes etc.
- ✓ Recycling one ton of cardboard can save 390 kWh of energy & 1.1 barrels (46 gal.) of oil.
- ✓ Recycling 1 ton of corrugated cardboard saves 700 gallons of water.
- ✓ Recycling one ton of cardboard saves over 9 cubic yards of landfill space.
- ✓ Recycled cardboard saves 24% of the total energy needed for new cardboard.
- ✓ On average, the recycled content of a cardboard box is about 59%.
- ✓ 17 billion cardboard tubes are thrown in the trash each year.

Waste Equipment Services would be pleased to visit your site for a full assessment of your baling needs by looking at site logistics & waste volumes and advise which baler solution is best suited to your individual requirements

DIRECT PURCHASE or FLEXIBLE RENTAL AGREEMENT
Contact us to discuss your individual requirements
Telephone: 0330 223 0895 E-Mail: hello@waste-equip.co.uk

Images are for illustrative purposes only, products may vary, refer to contract for full information and final agreed specification

WASTE - EQUIPMENT SERVICES



VERTICAL BALERS

Introduction:

The most common waste streams for baling are cardboard, paper, plastics and cans and as we have said previously, the choice of which baler is right for you will largely depend on the volume produced for each individual waste stream and the ergonomics of your particular site.

Whilst most larger companies and organisations are well accustomed to mechanised waste processing, smaller companies may well have never even considered it as a viable option due to advice given to them by their waste carrier or for cost reasons. In general, the waste carriers would much prefer you to have as many of their bins as possible and will readily offer to increase the frequency of their collections. This is very much in the carriers interest but is it the right thing for YOU the customer when you weight up ALL the factors involved?

In our experience, even if the volume of your potential recyclables is only 'Small to Medium', the benefits to you and your site of mechanising certain elements of your waste processing by baling recyclables is a 'Win-Win' situation;

POTENTIAL COST SAVINGS - LESS GENERAL WASTE - FEWER BINS - EASIER HANDLING – CLEANER TIDIER & SAFER SITE

From an **ENVIRONMENTAL** and **ETHICAL** standpoint it is even clearer and very simple;

BETTER WASTE STREAM SEPARATION = IMPROVED RECYCLING = LESS TO LANDFILL = REDUCED CARBON FOOTPRINT

Advantages of Balers & Options:



- ✓ **MINI BALER** – small to medium waste volumes.
- ✓ **MIDI BALER** – medium waste volumes.
- ✓ **MILL SIZE BALER** – high waste volumes.
- ✓ Up to 90% reduction in cardboard volume.
- ✓ Single person operation.
- ✓ Automated baling cycle
- ✓ Reduced fire risk from baled card/paper products.
- ✓ Cleaner, tidier and safer site management.
- ✓ **REBATES FROM SELLING BALED MATERIAL**
- ✓ Easier Handling of baled materials.
- ✓ **LESS GENERAL WASTE TO LANDFILL**



Plastic Recycling Facts:

- ✓ Most families throw away about 40kg of plastic per year, which could otherwise be recycled.
- ✓ The use of plastic in Western Europe is growing about 4% each year.
- ✓ Plastic can take up to 500 years to decompose.
- ✓ Specifically, Polyethylene Terephthalate (PET) plastic bottles take 400 years to naturally decompose.
- ✓ Used PET packaging is known as "post-consumer PET" in the recycling industry.
- ✓ "Post-consumer PET" is commonly recycled into clothing, bedding & other products.
- ✓ Approximately 50 percent of plastic is used just once & then throw away.
- ✓ One million sea birds & 100,000 marine mammals are killed annually from discarded plastic in the seas.
- ✓ Annually approximately 500 billion plastic bags are used worldwide.

Waste Equipment Services would be pleased to visit your site for a full assessment of your baling needs by looking at site logistics & waste volumes and advise which baler solution is best suited to your individual requirements

DIRECT PURCHASE or FLEXIBLE RENTAL AGREEMENT

Contact us to discuss your individual requirements

Telephone: 0330 223 0895 E-Mail: hello@waste-equip.co.uk

Images are for illustrative purposes only, products may vary, refer to contract for full information and final agreed specification

WASTE - EQUIPMENT SERVICES



MINI BALER – Product Code: EWPR124

The **EWPR124 MINI BALER** is a compact solution which enables it to cater for low to medium volume users with sites that have limited space availability or specific budgetary requirements.

Our high quality balers have been designed for you, the end user, they are simple to use and very efficient with a quick return plate for ease and speed of operation.

We have off the shelf balers such as **EWPR124** and we can make bespoke balers specifically to fit the confines of your preferred location. We start with a mini and go all the way up to the industrial horizontal semi-automatic baler, so whether big or small requirements we have the baling solution for you.

All equipment is manufactured with all safety requirements in accordance with CE directives.

- ✓ High Density Bales
- ✓ 750mm Wide Loading aperture
- ✓ 6 tons Packing Force
- ✓ Wire or Heavy Duty Tape Bale
- ✓ Bale Eject Mechanism
- ✓ Suitable for Indoor & Outdoor Use
- ✓ Robust Design
- ✓ Easy Operation, One Push Start
- ✓ Reduced Labour Input & Costs
- ✓ Bales up to 100 kg
- ✓ Faster Loading
- ✓ Increased Payloads



Specification - Mini Baler (EWPR124)

Bale Size (mm)	700mm (W) x 600mm (D) x 600mm (H)
Bale Weights (kgs)	50 kg - 100 kg
Packing Force (tons)	6 tons
Cycle Timer (secs)	33 secs.
Electric Motor (KW/phase)	1.85 KW / 1 phase
Control Voltage (volts)	24 volts
Loading Aperture (mm)	750mm (W) x 450mm (H)
Bale Tying	Heavy Duty Tape or Wire
Machine Dimensions (mm)	915mm (W) x 850mm (D) x 2138mm (H)
Shipment Height (mm)	2138mm
Shipment Weight (kgs)	550 kgs

Due to continued product development, designs and specifications are subject to change without notice.

DIRECT PURCHASE or FLEXIBLE RENTAL AGREEMENT

Contact us to discuss your individual requirements

Telephone: 0330 223 0895 E-Mail: hello@waste-equip.co.uk

Images are for illustrative purposes only, products may vary, refer to contract for full information and final agreed specification

WASTE - EQUIPMENT SERVICES



MIDI BALER – Product Code: EWPR122

The **EWPR122 MIDI BALER** is a compact solution which enables it to cater for medium volume users with sites that have limited space availability or specific budgetary requirements.

Our high quality balers have been designed for you, the end user, they are simple to use and very efficient with a quick return plate for ease and speed of operation.

We have off the shelf balers such as **EWPR122** and we can make bespoke balers specifically to fit the confines of your preferred location. We start with a mini and go all the way up to the industrial horizontal semi-automatic baler, so whether you have big or small requirements we have the baling solution for you.

All equipment is manufactured with all safety requirements in accordance with CE directives.

- ✓ High Density Bales
- ✓ Extra Wide Loading aperture
- ✓ 16 tons Packing Force
- ✓ Wire or Heavy Duty Tape Bale
- ✓ Pre Full & Bale Full Warning
- ✓ Bale Eject Mechanism
- ✓ Suitable for Indoor & Outdoor Use
- ✓ Robust Design
- ✓ Easy Operation, One Push Start
- ✓ Reduced Labour Input & Costs
- ✓ Bales up to 250 kg
- ✓ Faster Loading & Increased Payloads



Typical Panel



Specification - Midi Baler (EWPR122)

Bale Size (mm)	1100mm (W) x 700mm (D) x 700mm (H)
Bale Weights (kgs)	150 kg - 200 kg
Packing Force (tons)	16 tons
Cycle Timer (secs)	35 secs.
Electric Motor (KW/phase)	2.2 KW / 1 phase
Control Voltage (volts)	24 volts
Loading Aperture (mm)	1100mm (W) x 500mm (H)
Bale Tying	Heavy Duty Tape or Wire
Machine Dimensions (mm)	1350mm (W) x 1100mm (D) x 2500mm (H)
Shipment Height (mm)	2500mm
Shipment Weight (kgs)	950 kgs

Due to continued product development, designs and specifications are subject to change without notice.

DIRECT PURCHASE or FLEXIBLE RENTAL AGREEMENT

Contact us to discuss your individual requirements

Telephone: 0330 223 0895 E-Mail: hello@waste-equip.co.uk

Images are for illustrative purposes only, products may vary, refer to contract for full information and final agreed specification

WASTE - EQUIPMENT SERVICES



MILL SIZE BALER – Product Code: EWPR123

The **EWPR123 MILL SIZE BALER** is a compact solution which enables it to cater for high volume users with sites that have limited space availability or specific budgetary requirements.

Our high quality balers have been designed for you, the end user, they are simple to use and very efficient with a quick return plate for ease and speed of operation.

We have off the shelf balers such as **EWPR123** and we can make bespoke balers specifically to fit the confines of your preferred location. We start with a mini and go all the way up to the industrial horizontal semi-automatic baler, so whether you have big or small requirements we have the baling solution for you.

All equipment is manufactured with all safety requirements in accordance with CE directives.

- ✓ Robust Design
- ✓ Easy Operation, One Push Start
- ✓ Reduced Labour Input & Costs
- ✓ Large Bales up to 500 kg
- ✓ Faster Loading
- ✓ Increased Payloads
- ✓ High Density Bales
- ✓ Large Loading Aperture
- ✓ 32 tons Packing Force
- ✓ Wire or Heavy Duty Tape Tying
- ✓ Pre Bale & Full Bale Warnings
- ✓ Suitable for Indoor & Outdoor Use



Typical Panel



Specification - Mill Baler (EWPR123)

Bale Size (mm)	1200mm (W) x 800mm (D) x 1200mm (H)
Bale Weights (kgs)	450 kg - 500 kg
Packing Force (tons)	32 tons
Cycle Timer (secs)	47 secs.
Electric Motor (KW/phase)	5.5 KW / 3 phase
Control Voltage (volts)	24 volts
Loading Aperture (mm)	1250mm (W) x 600mm (H)
Bale Tying	Heavy Duty Tape or Wire
Machine Dimensions (mm)	1500mm (W) x 1400mm (D) x 3780mm (H)
Shipment Height (mm)	2515mm
Shipment Weight (kgs)	1720 kgs

Due to continued product development, designs and specifications are subject to change without notice.

DIRECT PURCHASE or FLEXIBLE RENTAL AGREEMENT

Contact us to discuss your individual requirements

Telephone: 0330 223 0895 E-Mail: hello@waste-equip.co.uk

Images are for illustrative purposes only, products may vary, refer to contract for full information and final agreed specification

Horizontal Baler

Product Specification Sheet

for

EWPR158 – Horizontal Baler



WASTE - EQUIPMENT SERVICES



HORIZONTAL BALER – Product Code: EWPR158

The **EWPR158 HORIZONTAL BALER** produces high quality, square edged cardboard bales in the standard 1100mm wide x 750mm high bale dimension up to 1450mm Long and up to 500 kg depending on material.

With this model the feed opening is maximised at just under 1100mm wide x 1350mm in length which allows for loading of bulky or large items, and in particular large cardboard boxes can be loaded without breaking them down. Hand loading, bin lift or conveyor feed loading options are available, and features such as Hi / Lo Bale settings, Bale Pre-full and full indicators, Auto Start photocells are all standard.

With 36T baling force powered by high efficiency 11kw motor, the **EWPR158** system is ideal for many commercial and retail applications where cost savings are required in the baling and handling of dry recyclable materials. Loading options can be customised to suit particular site requirements and loading methods.

- ✓ Robust Design
- ✓ Engineered for Long Life
- ✓ Easy Operation
- ✓ Semi Automatic control
- ✓ Reduced Labour Input & Costs
- ✓ Faster Loading
- ✓ High Density Mill Quality Bales
- ✓ Wire or Heavy Duty Tape Tying
- ✓ Increased Payloads
- ✓ Reduced Transport Costs
- ✓ Loading Type Options Available
- ✓ Customisation Available



Specification - Horizontal Baler (EWPR158)

Bale Size (mm) nominal	1100mm (W) x 750mm (H) x up to 1450mm (L)
Bale Weights (kg) approx	Up to 400 kg - 500 kg (depending on material)
Packing Force (tons)	36 tons
Cycle Timer (secs)	75 secs standard with optional fast at 48 secs
Electric Motor (KW/phase)	11 KW / 3 phase
Control Voltage (volts)	24 volts
Loading Aperture (mm) approx	1350mm (L) x 1100mm (W)
Bale Tying	Heavy Duty Tape or Wire (4 Horizontal)
Machine Dimensions (mm) approx	6840mm (L) x 1520mm (W) x 1100/2295mm (H)
Shipment Weight (kg)	From 7500 kg

Notes: (Dimensions/Loads/Weights) All should be accurately confirmed prior to supply & installation:

Due to continued product development, designs and specifications are subject to change without notice.

DIRECT PURCHASE or FLEXIBLE RENTAL AGREEMENT

Contact us to discuss your individual requirements

Telephone: 0330 223 0895 E-Mail: hello@waste-equip.co.uk

Compactors

Product Specification Sheets

for

EWPR101 - Bin Press

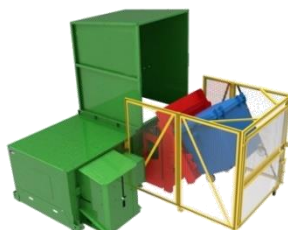
EWPR129 - Rotary Compactor

EWPR100 – Static Compactor

EWPR100-A – Static Compactor

EWPR102 – Portable Compactor

EWPR102-A – Portable Compactor



WASTE - EQUIPMENT SERVICES



COMPACTORS

Introduction:

It is an unfortunate fact that not all waste is recyclable and that in most businesses or organisations, there will be an element of general waste which is most likely to end up in landfill sites.

The obvious aim of any ethical and environmentally aware business is to reduce the impact of its general waste to a minimum. This is done initially with careful and thorough sorting and separation of recyclables and secondly, by reducing the overall volume of the remaining general waste to an absolute minimum.

By reducing the overall volume, not only does it reduce the number of general waste collections (thus directly contributing to fewer vehicular movements on and off site), but it also reduces the amount of valuable space taken up in landfill sites. Volume reduction of general waste is generally performed by using mechanical compaction.

Waste compactors come in various forms and with numerous options, the choice of which compactor is right for you will generally be dictated by the overall volume of general waste produced on a weekly or monthly basis and the restrictions imposed by your own individual site. In general terms, the more space available on site for dealing with general waste, the more the available choices.

Waste Equipment Services provide a range of compactors individually tailored to your needs and particular application, whether compact stand alone units, static or portable, with or without bin lifts or indeed fully custom, we will have the solution to tackle your compaction needs.

Advantages of Compactors:

- ✓ Large reductions in general waste volume.
- ✓ Typically up to 80% volume reduction.
- ✓ Savings in handling time.
- ✓ Savings in labour handling costs.
- ✓ Savings in carrier costs (fewer GW collections).
- ✓ Reduced vehicle movements on and off site.
- ✓ Generally less GW storage space required.
- ✓ Cleaner, tidier and safer site.
- ✓ Reduced impact on landfill sites.
- ✓ Reduction in company carbon footprint.
- ✓ Simple, easy & quick machine operations.
- ✓ Compact solutions for small waste volumes.



Waste Equipment Services would be pleased to visit your site for a full assessment of your compactor needs by looking at site logistics & waste volumes and advise which compactor solution is best suited to your individual requirements

DIRECT PURCHASE or FLEXIBLE RENTAL AGREEMENT

Contact us to discuss your individual requirements

Telephone: 0330 223 0895 E-Mail: hello@waste-equip.co.uk

Images are for illustrative purposes only, products may vary, refer to contract for full information and final agreed specification

WASTE - EQUIPMENT SERVICES



COMPACTORS

Introduction:

Types of Compaction Machinery:

Lower Waste Volume Stand Alone Units:

For sites with a low volume waste streams or restrictions in space, the need for waste compaction is still there and can be handled equally as well with stand alone units such as the **EWPR101 Bin Press/Compactor** (which is available to suit a wide range of bin sizes) or the **EWPR129 Rotary Compactor**. Both of these units are exceptionally capable and will contribute significantly to reducing waste volume, reducing bin numbers, reducing carrier collections and bringing savings in labour, time and money.



Static Compactors:

Sometimes referred to as stationary or fixed compactors, static compactors come in two distinct parts. The compactor chassis, which is installed and bolted down to the ground, and the container bin which is firmly clamped onto the chassis by means of side mounted rigging screw clamp and which is removed when required for waste material disposal. The chassis contains a hydraulically powered sliding head which pushes and compresses the waste material into the container bin. When full, the container bin is separated from the chassis and collected by the waste carrier for transport to landfill or increasingly, for further sorting before landfill disposal.



Portable Compactors:

In general, portable compactors work on a very similar basis to the static compactor except that the compaction unit and waste container are integral and remain as one unit. There are generally two distinct types: Chain Lift (Skip Lift) & Hook Lift (Roll On/Roll Off). Each have their advantages and disadvantages however the Chain lift units tend to be smaller and often only take up the space of a average car parking space. Both types will have various options such as bin lifts etc. When full the carrier will generally collect the complete unit, take it for emptying and return it for further use.



Waste Equipment Services would be pleased to visit your site for a full assessment of your compactor needs by looking at site logistics & waste volumes and advise which compactor solution is best suited to your individual requirements

DIRECT PURCHASE or FLEXIBLE RENTAL AGREEMENT

Contact us to discuss your individual requirements

Telephone: 0330 223 0895 E-Mail: hello@waste-equip.co.uk

Images are for illustrative purposes only, products may vary, refer to contract for full information and final agreed specification

WASTE - EQUIPMENT SERVICES



BIN PRESS – Product Code: EWPR101

The **EWPR101 BIN PRESS** is a compact solution which enables it to cater for small and medium volume users and sites with limited space availability or specific budgetary requirements.

This high quality Bin Press has been designed for you, the end user, they are simple to use and very efficient, it is suitable for both indoor or outdoor use.

Waste volume and waste disposal costs are typically reduced by up to 66%, reducing storage space and saving money. This equipment is manufactured with all safety requirements in accordance with CE directives.



- ✓ Compact 3 Bins into 1
- ✓ Safe and Easy to use
- ✓ Reduces Weekly Waste Costs
- ✓ Optional Bin Weigh System
- ✓ Reduces Waste Storage Space
- ✓ Cleaner & Tidier Waste Storage

Specification: Bin Press (EWPR101)

Height (mm / inches)	1,700mm / 66.93"
Width (mm / inches)	1,000mm / 39.37"
Depth (mm / inches)	1,300mm / 51.18"
Weight (kg)	285kg
Power	220 Volt or optional 110 Volt
Certification	CE Certified. Manufactured to ISO 9001
Colour	Green
Finish	Primed and Powder Coated

Due to continued product development, designs and specifications are subject to change without notice.

DIRECT PURCHASE or FLEXIBLE RENTAL AGREEMENT

Contact us to discuss your individual requirements

Telephone: 0330 223 0895 E-Mail: hello@waste-equip.co.uk

Images are for illustrative purposes only, products may vary, refer to contract for full information and final agreed specification

WASTE - EQUIPMENT SERVICES



ROTARY COMPACTOR – Product Code: EWPR129

The **EWPR129 ROTARY COMPACTOR** is a compact solution which enables it to cater for small and medium volume users and sites with limited space availability.

This high quality Rotary Compactor has been designed for you, the end user, it is simple to use and very efficient. With a small footprint, high capacity for waste and high compaction ratio, it has the flexibility to be used in multiple applications of waste compaction.

Utilizing rotary arm compaction technology, this industrial waste compactor is unique in that it places significant contact pressure and torque on waste to remove the maximum amount of air from the compacted waste.

Achieving compaction ratios of greater than 6:1, the **EWPR129** is highly efficient and greatly reduces your waste disposal costs.

- ✓ Small Footprint
- ✓ Simple To use
- ✓ Compacts Wet & Dry Waste
- ✓ High Contact Pressure
- ✓ High Compaction Torque
- ✓ Rotary Arm Compaction
- ✓ Continuous Compaction
- ✓ Over 6:1 Compaction Ration
- ✓ Pallet Waste Bag Collection
- ✓ Reduces Waste Disposal Costs



Typical Panel



Specification - Rotary Compactor (EWPR129)

Dimensions (mm)	2200mm x 1300mm x 1550mm
Dimensions Working (mm)	3020mm x 1300mm x 1550mm)
Loading Height (mm)	1470mm
Weight (kg)	1220kg
Power	240/480 Volt 3-phase 14Amp/7Amp
Torque	4,400ft-lbs
Compacted Bags Weight (kg)	227-431kg
Compacted Bags Dimensions (mm)	1.4 cubic meters

Due to continued product development, designs and specifications are subject to change without notice.

DIRECT PURCHASE or FLEXIBLE RENTAL AGREEMENT

Contact us to discuss your individual requirements

Telephone: 0330 223 0895 E-Mail: hello@waste-equip.co.uk

Images are for illustrative purposes only, products may vary, refer to contract for full information and final agreed specification

WASTE - EQUIPMENT SERVICES



STATIC COMPACTOR – Product Code: EWPR100

Our **EWPR100 STATIC COMPACTORS** are built to suit your specific needs and can be designed to bespoke requirements.

They are available with multiple loading methods and adaptable output volumes, meaning we can tailor your static compactor to work in conjunction with the container of your choice. This helps to streamline your waste management, improve business efficiency and save on labour costs. We will ensure your compactor compacts waste to suit the containers you use to store and transport your waste.

All equipment is manufactured with all safety requirements in accordance with CE directives.

- ✓ Simple Operation
- ✓ Easy to Use
- ✓ Adjustable PLC Programmes
- ✓ CHEM Standards Compliant
- ✓ Safety Cage Options
- ✓ Drop Forged Clamps & Hooks
- ✓ Heavy Duty Steel Construction
- ✓ High Reliability
- ✓ Built-In Power pack
- ✓ Vandal Proof Main Control Panel



Specification - Static Compactor (ShortEWPR100)

Volume per Stroke / Box Volume	1.37 / 1.77 c.m.
Cycle Time Standard / Fast (secs)	56 / 35 secs.
Ram Face Pressure @ 200 BAR	43 psi
Compaction Force@ 200 BAR	33 tons
Electric Motor (KW/Amps)	5.5 KW / 16 amps
Anti Vandal Control Panel	included
Cylinder Bore	100x2
Packing Ram Full Stroke (mm)	1500mm
Packing Ram Penetration (mm)	250mm
Machine Dimensions (mm)	2090mm (W) x 1667mm (D) x 1570mm (H)
Loading Height (mm)	1290mm

Due to continued product development, designs and specifications are subject to change without notice.

DIRECT PURCHASE or FLEXIBLE RENTAL AGREEMENT

Contact us to discuss your individual requirements

Telephone: 0330 223 0895 E-Mail: hello@waste-equip.co.uk

Images are for illustrative purposes only, products may vary, refer to contract for full information and final agreed specification

WASTE - EQUIPMENT SERVICES



STATIC COMPACTOR – Product Code: EWPR100-A

Our **EWPR100-A STATIC COMPACTORS** are built to suit your specific needs and can be designed to bespoke requirements.

They are available with multiple loading methods and adaptable output volumes, meaning we can tailor your static compactor to work in conjunction with the container of your choice. This helps to streamline your waste management, improve business efficiency and save on labour costs. We will ensure your compactor compacts waste to suit the containers you use to store and transport your waste.

All equipment is manufactured with all safety requirements in accordance with CE directives.

- ✓ Simple Operation
- ✓ Easy to Use
- ✓ 45 Second Cycle time
- ✓ CHEM Standards Compliant
- ✓ Safety Cage Options
- ✓ Comb Lifter
- ✓ Heavy Duty Steel Construction
- ✓ High Reliability



Specification - Static Compactor (Short EWPR100 - A)

Volume per Stroke / Box Volume	1.37 / 1.77 c.m.
Cycle Time Standard / Fast (secs)	45 sec
Basic Hydraulic Pressure	150 Bar
Charge Box Volume	1.61m3
Electric Motor (KW/Amps)	7.5 KW / 16 amps
Control Panel Voltage	24 Volt
Power Supply	415 Volt - 3 Phase - 32 amp
Packing Ram Full Stroke (mm)	1500mm
Packing Ram Penetration (mm)	250mm
Overall Machine Dimensions (mm)	4250mm (W) x 2500mm (L) x 2500mm (H)
Loading Height (mm)	1450mm

Due to continued product development, designs and specifications are subject to change without notice.

DIRECT PURCHASE or FLEXIBLE RENTAL AGREEMENT

Contact us to discuss your individual requirements

Telephone: 0330 223 0895 E-Mail: hello@waste-equip.co.uk

Images are for illustrative purposes only, products may vary, refer to contract for full information and final agreed specification

WASTE - EQUIPMENT SERVICES



PORTABLE COMPACTOR – Product Code: EWPR102

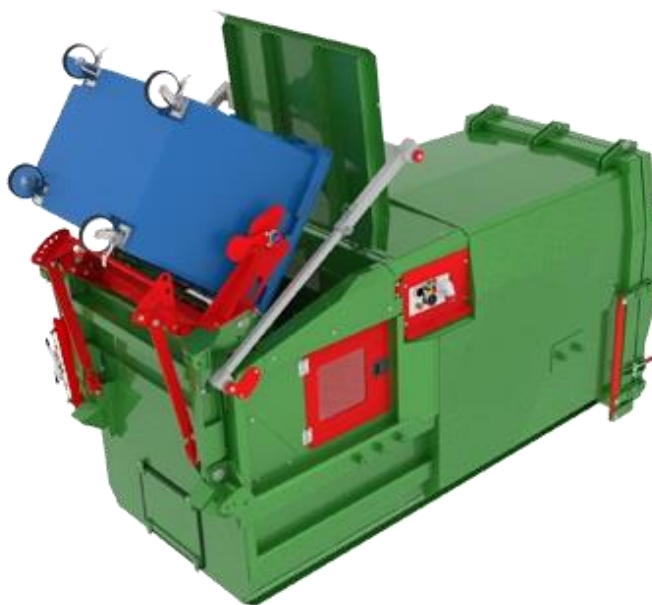
The **EWPR102 PORTABLE COMPACTOR** works on a similar principle to a static compactor but unlike the typical static compactor, the container and compaction unit are combined together.

It is designed for transportation and emptying with a regular chain lift skip truck. Generally not much longer than an average car parking space, the **EWPR102** can be located just about anywhere where there is access for the skip vehicle to load.

When full, the waste contractor lifts and removed the whole unit and returns it again when empty. Some portable compactors can be fitted with bin lifts but aside from that, the load and feed options are limited.

All equipment manufactured with all safety requirements in accordance with CE directives.

- ✓ All-in-One Leak Proof Construction
- ✓ Curved & Extra Strength Rear Door
- ✓ Door Sealing for Liquids Retention
- ✓ Pull Out power Pack
- ✓ Low Level Manual Loading
- ✓ Bin Lift Facility
- ✓ Pre Full & Bin Full Warnings



Specification - Portable Compactor (EWPR102)

Volume per Stroke / Hour	0.65 / 54 c.m.
Cycle Time (secs)	43 secs.
Power Supply (Amp / Volts)	16 amp / 380 volts
Compaction Force@ 3000psi	22 tons
Electric Motor (KW/phase)	2.2 KW / 1 phase
Packing Blade Face Pressure	42 psi
Cylinder Bore	80x2
Packing Blade Depth (mm)	450mm
Ram Penetration (mm)	200mm
Machine Dimensions (mm)	4230mm (W) x 1905mm (D) x 2180mm (H)
Loading Height (mm)	950mm / 1190mm

Due to continued product development, designs and specifications are subject to change without notice.

DIRECT PURCHASE or FLEXIBLE RENTAL AGREEMENT

Contact us to discuss your individual requirements

Telephone: 0330 223 0895 E-Mail: hello@waste-equip.co.uk

Images are for illustrative purposes only, products may vary, refer to contract for full information and final agreed specification

WASTE - EQUIPMENT SERVICES



PORTABLE COMPACTOR – Product Code: EWPR102-A

The **EWPR102 PORTABLE COMPACTOR-A** works on a similar principle to a static compactor but unlike the typical static compactor, the container and compaction unit are combined together.

It is designed for transportation and emptying with a regular chain lift skip truck. Generally not much longer than an average car parking space, the **EWPR102-A** can be located just about anywhere where there is access for the skip vehicle to load.

When full, the waste contractor lifts and removed the whole unit and returns it again when empty. Some portable compactors can be fitted with bin lifts but aside from that, the load and feed options are limited. The **EWPR102-A** is designed for manual loading with no bin lift facility.

All equipment manufactured with all safety requirements in accordance with CE directives.

- ✓ All-in-One Leak Proof Construction
- ✓ Curved & Extra Strength Rear Door
- ✓ Door Sealing for Liquids Retention
- ✓ Pull Out power Pack
- ✓ Low Level Manual Loading
- ✓ Pre Full & Bin Full Warnings



Specification - Portable Compactor (EWPR102 - A)

Volume per Stroke / Hour	0.65 / 54 c.m.
Cycle Time (secs)	43 secs.
Power Supply (Amp / Volts)	16 amp / 380 volts
Compaction Force@ 3000psi	22 tons
Electric Motor (KW/phase)	2.2 KW / 1 phase
Packing Blade Face Pressure	42 psi
Cylinder Bore	80x2
Packing Blade Depth (mm)	450mm
Ram Penetration (mm)	200mm
Machine Dimensions (mm)	4230mm (W) x 1905mm (D) x 2180mm (H)
Loading Height (mm)	950mm / 1190mm

Due to continued product development, designs and specifications are subject to change without notice.

DIRECT PURCHASE or FLEXIBLE RENTAL AGREEMENT

Contact us to discuss your individual requirements

Telephone: 0330 223 0895 E-Mail: hello@waste-equip.co.uk

Images are for illustrative purposes only, products may vary, refer to contract for full information and final agreed specification

Bottle Crushers

Product Specification Sheets

for

EWPR187 – Bottle Crusher
(Volume Fed)

EWPR401 – Bottle Crusher
(Stand Alone)

EWPR402 – Bottle Crusher
(Under the Counter)



WASTE - EQUIPMENT SERVICES



BOTTLE CRUSHERS

Introduction:

Any business or industry where glass bottles, jars, glass storage containers etc. are a waste stream will be all too aware of the problems associated with their disposal. Whether behind a bar, in a corporate hospitality scenario, hotel or in certain industrial applications, the storage of glass containers and bottles takes up valuable space that could be used for other purposes and is very labour intensive.

The use of a suitable bottle crusher, whether at the point of end use or in a waste processing area, takes the glass container and breaks it into 'glass cullet' which is typically up to 80% less volume (or a factor of 5:1) than the original container. Glass cullet is far easier to manage, takes up less storage space, is quieter to move and is the standard form for ethical glass recycling.

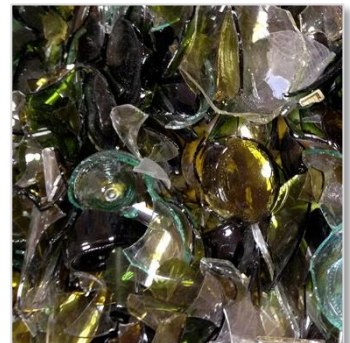
Depending on the application and individual site, many bottle crushers can be installed at the point of end use (i.e. behind the bar, the return section or 'back of house'). As the bottles/containers are empty/returned, rather than storing them for future processing they are crushed immediately into an easy to move wheeled bin or tote which when full, can be removed ready for carrier collection. This results in far fewer movements, less labour and considerable time savings.

Waste Equipment Services provide a range of bottle crushers individually tailored to your needs and particular application, whether under the counter, stand alone, volume fed or fully custom.

Advantages of Bottle Crushers:



- ✓ Massive reduction in glass storage space.
- ✓ Savings in handling time.
- ✓ Savings in labour handling costs.
- ✓ Savings in carrier collection costs (fewer bins).
- ✓ Reduction in 'bottle clinking' noise pollution.
- ✓ Reduced to standard 'cullet' form for recycling.
- ✓ Simple and easy machine operation.
- ✓ Easily moveable machine units.
- ✓ Small machine footprint.
- ✓ Self-contained units.
- ✓ Powered by 240 Volt/50Hz.



Glass Recycling Facts:

- ✓ Glass is 100% recyclable and can be recycled endlessly without loss in quality or purity.
- ✓ Over a ton of natural resources are saved for every ton of glass recycled.
- ✓ Energy costs drop about 2-3% for every 10% of cullet used in the manufacturing process.
- ✓ An estimated 80 percent of recovered glass containers are made into new glass bottles.
- ✓ A glass container can go from a recycling bin to a store shelf in as little as 30 days.
- ✓ One ton of carbon dioxide is reduced for every six tons of recycled container glass used in the manufacturing process.
- ✓ Recycled glass cullet can be substituted for up to 95% of raw materials required to manufacture a fresh bottle.
- ✓ Recycled glass is sought by the glass packaging industry as it requires less energy to process, and therefore is more cost effective than virgin glass.

Waste Equipment Services would be pleased to visit your site for a full assessment of your bottle crushing needs by looking at site logistics & waste volumes and advise which bottle crusher solution is best suited to your individual requirements

DIRECT PURCHASE or FLEXIBLE RENTAL AGREEMENT

Contact us to discuss your individual requirements

Telephone: 0330 223 0895 E-Mail: hello@waste-equip.co.uk

Images are for illustrative purposes only, products may vary, refer to contract for full information and final agreed specification

WASTE - EQUIPMENT SERVICES



BOTTLE CRUSHER – Product Code: EWPR187

The **EWPR187 BOTTLE CRUSHER** is a compact solution which enables it to cater for high volume bottle crushing, sites with limited space availability or specific budgetary requirements.

This **Volume Fed** bottle crusher can crush up to 4000 bottles per hour or 680 bottles in 10 minutes and can be used indoors and outdoors. The built-in extraction system makes it ideal for use in areas with restricted ventilation. Waste glass is collected in a 140L wheelie bin located inside the machine.

Crushing waste glass bottles eliminates the need for sorting bottles, reduces the number of storage bins required and the area for storing those bins. This generates an overall saving on the costs of waste glass bottle disposal.

All equipment is manufactured with all safety requirements in accordance with CE directives



- ✓ Reduces Waste Disposal Costs
- ✓ Reduces Bottle Volume by 5:1
- ✓ 140 litre Wheelie Bin for 680 Bottles
- ✓ Reduces Glass Noise Pollution
- ✓ All Crushed Glass Can be Recycled
- ✓ Simple to use & Operate

Specification - Bottle Crusher (EWPR187)

Height (mm)	1920mm
Width (mm)	840mm
Depth (mm)	1060mm
Weight (kg)	185kg
Power	220 Volt or optional 110 Volt
Certification	CE Certified. Manufactured to ISO 9001
Colour	Green
Finish	Primed and Powder Coated

Due to continued product development, designs and specifications are subject to change without notice.

DIRECT PURCHASE or FLEXIBLE RENTAL AGREEMENT

Contact us to discuss your individual requirements

Telephone: 0330 223 0895 E-Mail: hello@waste-equip.co.uk

Images are for illustrative purposes only, products may vary, refer to contract for full information and final agreed specification

WASTE - EQUIPMENT SERVICES



BOTTLE CRUSHER – Product Code: EWPR401

The **EWPR401 BOTTLE CRUSHER** is a compact solution which enables it to cater for medium to high volume bottle crushing, sites with limited space availability or specific budgetary requirements.

The **EWPR401** is a **Stand-Alone**, high capacity glass bottle crusher or glass breaker designed to save hospitality businesses on their overall costs of waste glass disposal. This unit is designed to stand in the bar area & allow staff to crush waste glass bottles as the bottles are poured or as they are returned from the floor. The crushed glass is held in a 140 Litre bin holding up to 680 bottles equivalent of crushed glass. This unit sits well in any 'back of house' situation and operates at a very low 68 dB noise level which is similar to the noise level generated by a commercial bar glass washer unit.

All equipment is manufactured with all safety requirements in accordance with CE directives



- ✓ Small footprint (600mm x 600mm)
- ✓ Reduces Bottle Volume by 5:1
- ✓ 140 litre Wheelie Bin for 680 Bottles
- ✓ Simple to use, easy to empty
- ✓ Low Noise Operation
- ✓ Savings on storage & Labour Costs

Specification - Bottle Crusher (EWPR401)	
Height (mm)	1700mm
Width (mm)	600mm
Depth (mm)	600mm
Weight (kg)	TBA
Power	220 Volt or optional 110 Volt
Certification	CE Certified. Manufactured to ISO 9001
Colour	Black
Finish	Primed and Powder Coated

Due to continued product development, designs and specifications are subject to change without notice.

DIRECT PURCHASE or FLEXIBLE RENTAL AGREEMENT

Contact us to discuss your individual requirements

Telephone: 0330 223 0895 E-Mail: hello@waste-equip.co.uk

Images are for illustrative purposes only, products may vary, refer to contract for full information and final agreed specification

WASTE - EQUIPMENT SERVICES

BOTTLE CRUSHER – Product Code: EWPR402

The **EWPR402 BOTTLE CRUSHER** is an extremely compact unit which enables it to cater for low to medium volume bottle crushing, sites with limited space availability or specific budgetary requirements.

The **EWPR401 Under the Counter** unit saves on labour, on storage space and on waste glass disposal costs. This machine fits under a standard height bar counter and allows staff to crush the waste glass bottles as they are poured or as the empty bottles are returned from the floor. Crushing waste glass bottles at the point of production saves both space and time and keeps staff focused on serving customers rather than managing waste glass bottles in the bar area. The machine starts automatically as the glass bottles are fed and the crushed glass or cullet is collected in a box within the machine itself.

All equipment is manufactured with all safety requirements in accordance with CE directives.



- ✓ Auto Start when bottles fed in
- ✓ Handles bottles up to 1 litre volume
- ✓ Self Contained Tote Collection Box
- ✓ Simple to use, easy to empty
- ✓ Holds Equivalent Glass to around 90 bottles
- ✓ Low Height for 'Under-Bar' Installation

Specification - Bottle Crusher (EWPR402)

Height (mm)	840mm
Width (mm)	600mm
Depth (mm)	600mm
Weight (kg)	TBA
Power	220 Volt or optional 110 Volt
Certification	CE Certified. Manufactured to ISO 9001
Colour	Black
Finish	Primed and Powder Coated

Due to continued product development, designs and specifications are subject to change without notice.

DIRECT PURCHASE or FLEXIBLE RENTAL AGREEMENT

Contact us to discuss your individual requirements

Telephone: 0330 223 0895 E-Mail: hello@waste-equip.co.uk

Images are for illustrative purposes only, products may vary, refer to contract for full information and final agreed specification

Food Waste Station

Product Specification Sheet

for

EWPR163 – Food Waste Station



WASTE - EQUIPMENT SERVICES



FOOD WASTE STATION

Introduction:

Food waste is a major problem for any organisation that produces it. It's notoriously difficult to process and dispose of safely and efficiently and is the most likely waste stream to contaminate other waste fractions.

Food waste typically represents around 40% of total commercial catering waste. Of this 40%, approximately 77% is liquid. The **EWPR163 Food Waste Station** grinds the food waste into fine particles, these particles feed directly into the built-in dewatering system. Through centrifugal action, the Food Waste Station forces out the excess liquid from the macerated waste.

This "grey water" is fed directly to drain, the resulting 'solid' fraction of the food waste is collected in a small & easily managed lidded bin ready for onward processing.



Control Panel

- ✓ **Transport Savings:** Reduce waste collection costs by reducing food waste volume and weight requiring collection.
- ✓ **Storage Savings:** By reducing the waste volume, on site waste storage facility requirements are also reduced.
- ✓ **Labour Savings:** The self cleaning system reduces staff time managing and processing any food waste.
- ✓ **Energy Savings:** Compact design and short processing times ensure low operating costs and minimal use of floor space.



Waste Bin

Higher Capture Rate:

High capture rates improve the quality of the "grey water" going to drain (less suspended solid particles), aiding local water authority approval.

Self Rinse System:

Following each operation the machine undertakes a quick rinse cycle preventing any build up of food.

Range of Screen Sizes:

Giving the option to recover greater waste levels or concentrate on pure volume reduction.

Fully Enclosed System:

Prevents food entering the unit, keeping the machine clean and free of waste and reducing operational noise.

Self Cleaning Operation:

The Food Waste Station can undertake a thorough clean ensuring the whole system is free of food and grease, vastly reducing the labour time required to operate the machine.

Self Emptying:

This eliminates the need for staff to empty the auger assembly reducing labour times required to operate the machine.

Visual Control Panel:

Kitchens are a noisy environment, The Food Waste Station incorporates a simple LED display to allow monitoring of the state of the equipment during operation.

Intelligent Electronic Sensor:

Detects when the bin is full.

Waste Equipment Services would be pleased to visit your site for a full assessment of your Food Waste Processing requirements. By looking closely at your site logistics & waste volumes we can advise on how to maximise efficiency, reduce food waste volumes and in turn suggest strategies for significant cost savings.

DIRECT PURCHASE or FLEXIBLE RENTAL AGREEMENT

Contact us to discuss your individual requirements

Telephone: 0330 223 0895 E-Mail: hello@waste-equip.co.uk

Images are for illustrative purposes only, products may vary, refer to contract for full information and final agreed specification

WASTE - EQUIPMENT SERVICES



FOOD WASTE STATION – Product Code: EWPR163

The **EWPR163 FOOD WASTE STATION** is a compact solution which grinds the food waste into fine particles, these particles feed directly into the built-in dewatering system.

Through centrifugal action, the **EWPR163** forces out the excess liquid from the macerated waste. This “grey water” is fed directly to drain, the resulting ‘solid’ fraction of the food waste is collected in a small & easily managed lidded bin ready for onward processing.

Food waste comprises of up to 77% liquid and can be extremely costly to dispose of, the **EWPR163** provides a suitable solution to this problem.

All equipment is manufactured with all safety requirements in accordance with CE directives.

- ✓ Reduces Food Waste Mass by up to 60%
- ✓ Grey Water Dispensed to Drain
- ✓ Solids Captured in Food Waste Bin
- ✓ Reduces Waste Costs
- ✓ Reduces Food Waste Smells
- ✓ Ideal for all Commercial Kitchens



Specification - Waste Station (EWPR163)

Machine Dimensions (mm)	1000mm (W) x 700mm (D) x 900mm (H)
Machine Weight (kgs)	192 kg
Covers / kgs per hour	1450 / 700
Voltage	380-415
Electric Motor (KW/phase)	1.1 KW / 3 phase
Water (litres per cleaning cycle)	12
Energy Cost (typical per day)	£0.64
Frequency (Hz)	50 / 60
Amps (max)	7
Supply Amps (suggested)	16A
Decibel (dB) during operation	60 dB

Due to continued product development, designs and specifications are subject to change without notice.

DIRECT PURCHASE or FLEXIBLE RENTAL AGREEMENT

Contact us to discuss your individual requirements

Telephone: 0330 223 0895 E-Mail: hello@waste-equip.co.uk

Images are for illustrative purposes only, products may vary, refer to contract for full information and final agreed specification

Lifting & Moving

Product Specification Sheets

for

EWPR166 – Electric Stacker Truck

EWPR126 – Manual Pallet Truck

EWPR156 – Electric Truck



WASTE - EQUIPMENT SERVICES



ELECTRIC STACKER TRUCK – Product Code: EWPR166

The **EWPR166 ELECTRIC STACKER TRUCK** is a compact solution which enables it to cater for sites with limited space availability or specific budget requirements.

Our high quality Stacker Trucks have been designed for you, the end user, they are simple to use and very efficient.

We have off the shelf Stacker Trucks such as **EWPR166** and we can also supply bespoke stacker trucks specifically to fit the exact requirements of your business with options available for choice of wheel materials, fork dimensions, variety of masts, lift height indicator, load weight indicator, inbuilt charger and pin code start-up.

All equipment is manufactured with all safety requirements in accordance with CE directives.

- ✓ Wide Castor Wheel
- ✓ Robust Construction
- ✓ Low Centre of Gravity for Stability
- ✓ Compact Design
- ✓ Tapered Fork Tips
- ✓ Maximum Manoeuvrability
- ✓ High Mast Strength
- ✓ 'Visionmast' Technology
- ✓ Effortless Lift Action



Specification - Stacker Truck (EWPR126)

Load Capacity (kg)	1600
Operator Type	Pedestrian/Stand on
Overall Width	790/926mm
Overall Length	2037/2492mm
Length to fork face	887/1343mm
Turning circle radius	1536/1972mm
Height of Tiller arm	1224mm
Lift Height	115mm
Fork Dimensions	56mm x 185mm x 1150mm
Ground Clearance at centre	4029mm
Truck weight (kgs)	2960 kgs
Due to continued product development, designs and specifications are subject to change without notice.	

DIRECT PURCHASE or FLEXIBLE RENTAL AGREEMENT

Contact us to discuss your individual requirements

Telephone: 0330 223 0895 E-Mail: hello@waste-equip.co.uk

Images are for illustrative purposes only, products may vary, refer to contract for full information and final agreed specification


MANUAL PALLET TRUCK – Product Code: EWPR126

The **EWPR126 MANUAL PALLET TRUCK** is a compact and exceptionally versatile solution to moving palletised loads in a wide variety of applications. Our range of manual pallet trucks have been selected for you, the end user, they are of high quality and very simple to use.

We have off the shelf pallet trucks available immediately as per the **EWPR126** example below. We can also supply bespoke pallet trucks specifically designed to fit the individual requirements of your business and particular application.

We can offer options of tandem load wheels, a choice of different steering & load wheels depending on your application and a variety of fork dimensions as well as an optional load weight indicator.

All equipment is manufactured with all safety requirements in accordance with CE directives.

- ✓ Strong Chassis
- ✓ Steel Entry Brackets
- ✓ Low Centre of Gravity for Stability
- ✓ Compact Design
- ✓ 210-Degree Steering Angle
- ✓ Maximum Maneuverability
- ✓ Self-lubricating Components
- ✓ Low-maintenance Features
- ✓ Effortless Lift Action


Specification - Pallet Truck (EWPR126)

Load Capacity (kg)	2500
Operator Type	Pedestrian
Overall Width	520mm
Overall Length	1533mm
Length to fork face	384mm
Turning circle radius	1266mm
Height of Tiller arm	1224mm
Lift Height	115mm
Fork Dimensions	45mm x 160mm x 1150mm
Ground Clearance at centre	40mm
Truck weight (kgs)	950 kgs

Due to continued product development, designs and specifications are subject to change without notice.

DIRECT PURCHASE or FLEXIBLE RENTAL AGREEMENT

Contact us to discuss your individual requirements

Telephone: 0330 223 0895 E-Mail: hello@waste-equip.co.uk

Images are for illustrative purposes only, products may vary, refer to contract for full information and final agreed specification

WASTE - EQUIPMENT SERVICES



ELECTRIC TRUCK – Product Code: EWPR156

The **EWPR156 ELECTRIC TRUCK** is a compact and efficient solution for moving materials from one place to another.

Examples of the **EWPR156 ELECTRIC TRUCK** are readily seen in action in most airports in the UK, Shopping Centres and Schools and many more applications.

Our electric vehicles are so versatile that they can fit almost any application, and if they don't, we can tailor make them so that they do.

All equipment is manufactured with all safety requirements in accordance with CE directives.

- ✓ Compact & Versatile
- ✓ Very Manoeuvrable
- ✓ Simple to Use
- ✓ Driver & single Passenger Seating
- ✓ Three Individual Braking Systems
- ✓ Twin Head, Tail & Brake Lights
- ✓ Audible Warnings
- ✓ Flashing Roof Mounted Beacon
- ✓ Safety Cut Out



Specification - Electric Truck (EWPR156)

Configuration	4 wheel
Total payload capacity	680kg
Speed	Max speed pre-set between 12-23 kph
Battery	48v
Lighting	Twin head, tail and brake lights
Instruments	Battery discharge indicator - hour meter
Steel Cab	Lockable slam vinyl doors
Load bed	1717mm long x 1265mm wide
Chassis and body	Aluminium
Tyres	20 x 10-10 6 ply rated pneumatic
Charger	On board 48 volt 1 Kw 12 hour recharge

Due to continued product development, designs and specifications are subject to change without notice.

DIRECT PURCHASE or FLEXIBLE RENTAL AGREEMENT

Contact us to discuss your individual requirements

Telephone: 0330 223 0895 E-Mail: hello@waste-equip.co.uk

Images are for illustrative purposes only, products may vary, refer to contract for full information and final agreed specification

General

Product Specification Sheets

for

EWPR151 – Drop Front Bins



WASTE - EQUIPMENT SERVICES



DROP FRONT BIN – Product Code: EWPR151

The **EWPR151 1100 LITRE DROP FRONT WHEELED BIN** with Lid Lock has been designed to allow for easy bin access and avoid unnecessary lifting by allowing waste to be disposed and removed using the drop front feature.

Incorporated into the EWPR151 bin is a lid lock that is fitted at the production stage ensuring that the bin is fully secure when not in use.

The **EWPR151** is available in a choice of moulded colours and galvanised versions all with a range of additional options for ease of use and adaptability.

All equipment is manufactured with all safety requirements in accordance with CE directives.

- ✓ Reinforced Hinges
- ✓ Swivel Castors
- ✓ Suitable for Inside & Outdoor Use
- ✓ Fitted Lid Lock
- ✓ Two Central Wheel Locks
- ✓ Choice of Moulded Colours & Galvanised



Specification - Drop Front Bin (EWPR151)

Dimensions (mm)	
Width	1450mm
Depth	1380mm
Height	1075mm
Hinges	Reinforced
Weight (kgs)	88 kg
Wheels	4
Wheel Locks	2
Lid Lock	1
Colour	Available in a range of colours
Handles	Ergonomic handles

Due to continued product development, designs and specifications are subject to change without notice

DIRECT PURCHASE or FLEXIBLE RENTAL AGREEMENT

Contact us to discuss your individual requirements

Telephone: 0330 223 0895 E-Mail: hello@waste-equip.co.uk

Images are for illustrative purposes only, products may vary, refer to contract for full information and final agreed specification

**WASTE -
EQUIPMENT**
SERVICES



www.waste-equip.co.uk

**Waste Equipment Services
WASTE PROCESSING EQUIPMENT**

Telephone Enquiries: 0330 223 0895
e-mail: hello@waste-equip.co.uk

**Waste Equipment Services
WASTE PROCESSING EQUIPMENT CATALOGUE**

All prices quoted are exclusive of VAT.

The company offers all items 'subject to availability' and reserves the right to change suppliers or specification without prior notice to an item of equivalent quality. Colours of items displayed in our brochure may vary, if your requirement for colour is specific to a brand or corporate theme you are advised to inform us. A copy of our standard terms & conditions are available on request.

VISIT

www.waste-equip.co.uk

**WASTE PROCESSING EQUIPMENT
CATALOGUE**

Telephone Enquiries: 0330 223 0895
e-mail: hello@waste-equip.co.uk



Registered Office:

Boyes Barn Whites Hill, Owslebury, Winchester, Hampshire, SO21 1LT
Registered No. 08306433 VAT No: 176 0513 17

(Waste Equipment Services is a trading style of The Waste Group Services Ltd.)